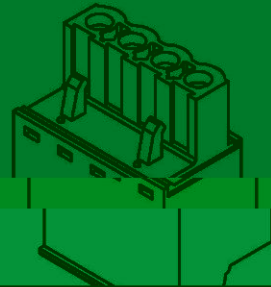
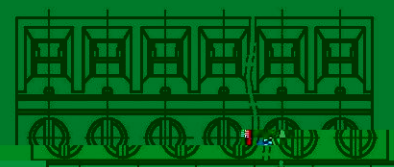


REVISION RECORD			
REV.	CONTENT	MOD.	DATE
△	增加绝缘厚度	LLM	2012/02/10
△	第一次增加元数架, 再次增加绝缘厚度	LLM	2012/02/22
△	防止螺栓在使用中倾斜	LXD	2013/11/06
△	改善螺栓和主体的匹配	LXD	2014/12/10



5.08±P±0.52

NOTES:

1. Voltage Rating: 300V, Current Rating: 15A
2. PITCH: 5.08mm
3. Insulation Withstands Voltage: 2500V/min
4. Insulation Resistance: 5MΩ or more at DC500V
5. Using Temperature Range: -40° C ~ +105° C